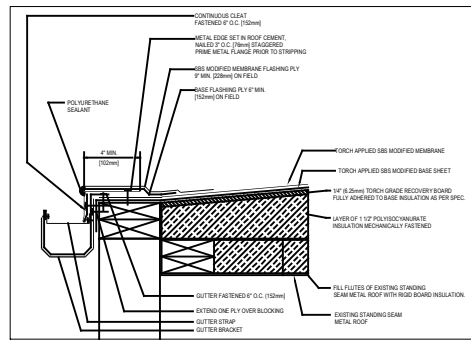


TYPICAL ROOF SECTION
N.T.S. 1/100



ROOF EDGE WITH GUTTER DETAIL
N.T.S. 2/100

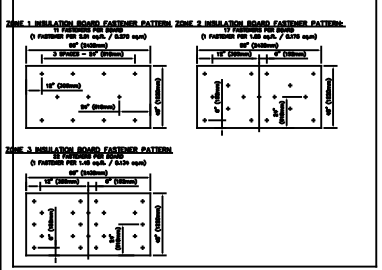
REVISIONS
ISSUED FOR TENDER DATE
04/01/2021

LEGEND OF SYMBOLS:

M/E	MECHANICAL EQUIPMENT	C	CAPPED CURB
P/V	PLUMBING / VENT	I/D	INTERNAL DRAIN
S	SPACE	D/S	DOWNSPOUT
R/H	ROOF HATCH	S/D	SCUPPER DRAIN

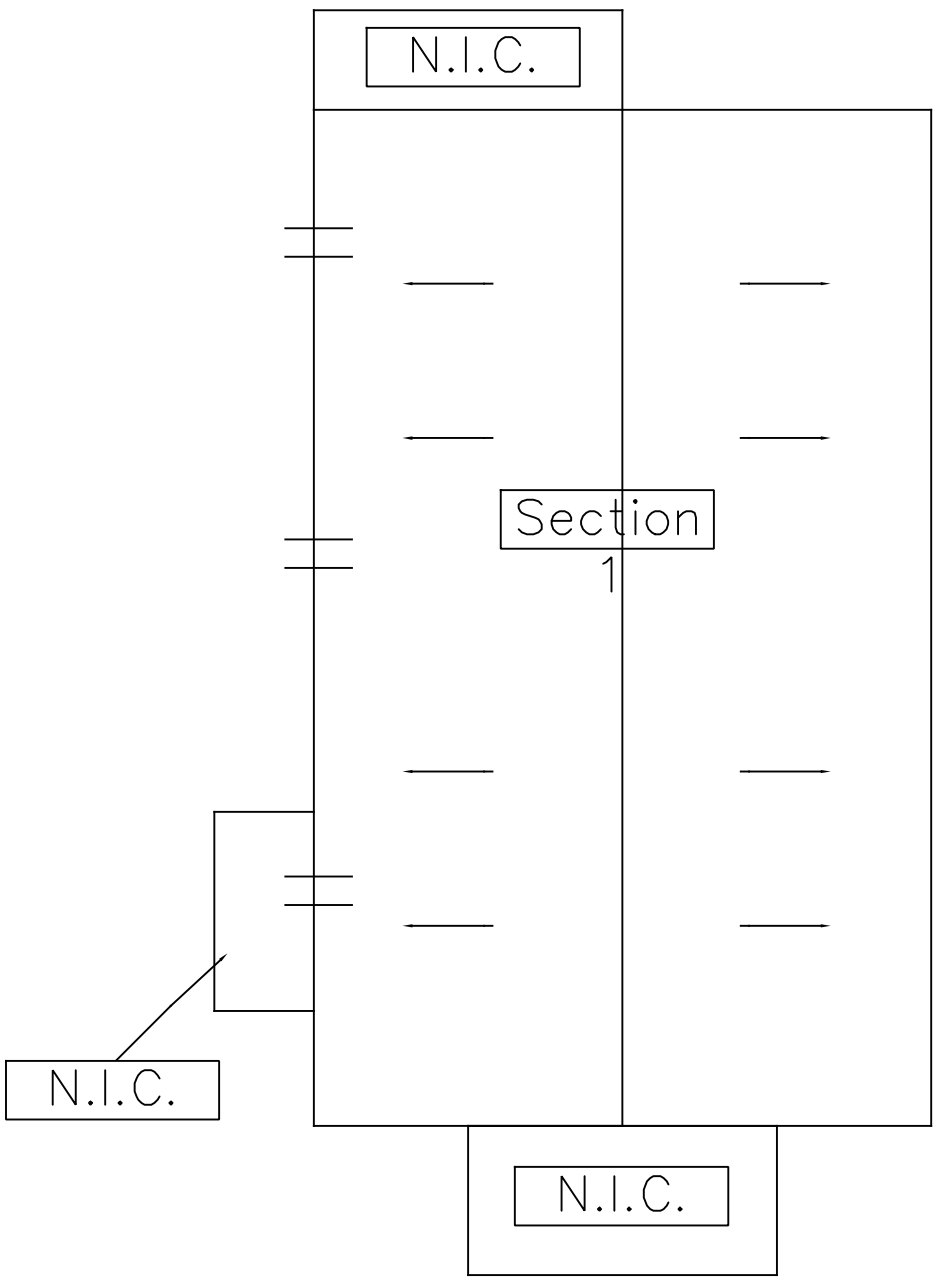
SCOPE OF WORK

- CHECK EXISTING INSULATION FOR DAMAGE/WET CONDITIONS AND REPORT TO OWNER'S REPRESENTATIVE.
- REMOVE PERIMETER WOOD BLOCKING TO RECEIVE NEW DRIP EDGE DETAIL.
- REPLACE DAMAGED/WET INSULATION AND DAMAGED WOOD BLOCKING TO MATCH EXISTING AS AUTHORIZED.
- INSTALL NEW WOOD BLOCKING AT ENTIRE PERIMETER DETAIL TO ENSURE THAT THE PERIMETER PROFILES DETAIL WILL ACCOMMODATE THE NEW FINISHED HEIGHT OF THE ROOFING ASSEMBLY.
- MECHANICALLY FASTEN AN ADDITIONAL LAYER OF 1" (25mm) POLYISOCYANURATE INSULATION, 48" x 84" (1220mm x 2134mm) BOARDS (BY APPROVED) TO SUBSTRATE ALL PER FASTENER PATTERN ON DRAWING TO ACHIEVE MINIMUM FASTENER REQUIREMENTS.
- INSTALL 1/4" (6.25mm) TORCH GRADE RECOVERY BOARD, 48" x 84" (1220mm x 2134mm) BOARDS FULLY ADHERED TO BASE INSULATION WITH INSULATION ADHESIVE. STEP ALL BOARDS INTO PLACE IMMEDIATELY AFTER PLACEMENT TO ENSURE FULL ADHESION. "TOOTH" BRACKS ALL SEAMS TO ALLOW NO GAPS IN INSULATION AND ENSURE ALL JOINTS ARE STAGGERED AND OFFSET BETWEEN LAYERS OF INSULATION.
- INSTALL ONE LAYER OF SBS TORCH BASE SHEET TO A PROPERLY PREPARED SUBSTRATE. OVER THE SBS TORCH BASE SHEET UNDERLAMENTED, LAY OUT THE ROLL IN THE DIRECTION TO BE FOLLOWED AND UNROLL @ 4" (102mm) SEAMS FOR THE TOP LAYER OF MODIFIED MEMBRANE WILL BE STAGGERED OVER THE SBS TORCH BASE SHEET SEAMS. SHINGLE IN PROPER DIRECTION TO SHED WATER ON EACH AREA OF ROOFING. LAY OUT THE ROLL IN THE DIRECTION TO BE FOLLOWED AND UNROLL @ 4" (102mm). USING A ROOFING TORCH, HEAT THE SURFACE OF THE COATED ADDITIONAL LAYER, THE BURNT OFF BACKER MUST BE AWAY. AT THIS POINT, THE MATERIAL IS NOT ENOUGH TO LAY INTO THE SUBSTRATE. PROCEED TO UNROLL THE SHEET WHILE HEATING AND PRESS DOWN WITH THE FOOT TO INSURE A PROPER BOND. REPEAT THE OPERATION WITH SUBSEQUENT ROLLS WITH SIDE LAPS OF 4" (102mm) AND END LAPS OF 4" (102mm). SHED EACH LAP A PROPER BOND BY FRINGING THE TORCH ALONG THE JOINT AND SPREADING THE MELTED BITUMEN EVENLY WITH A ROUNDED TROWEL TO ENSURE A SMOOTH, TIGHT SEAL.
- INSTALL BASE FLASHING PLY TO ALL PERIMETER AND PROJECTION DETAILS.
- INSTALL SBS TORCH MODIFIED MINERAL SURFACED MEMBRANE AS DIRECTED ABOVE FOR THE BASE SHEET.
- NEW PERIMETER DRIP EDGE TO RECEIVE NEW 1" GAUSTROUGH AND ASSOCIATED DOWN SPOUTS, C/W SPLASH PADS, COLOUR TRD.
- INSTALL NEW SPUN ALUMINUM STACK FLASHINGS AND INSULATE.
- WHERE INTO ROOFS ARE REQUIRED, SOLDER ALL SEAMS.
- INSTALL NEW 34 GAUGE SERIES BODY PREPARED TO SCOUR TO BE DETERMINED METAL COUNTER FLASHINGS ON ROOF CURBS, SLEEPERS, CAPS AND PERIMETER PARAPET WALLS AND CAP. PERIMETER METAL DETAILS WILL REQUIRE A CONTINUOUS STARTER STRIP SECURED BY (METHODS) E.G. METALS TO HAVE SLOTTED AND TO BE SECURED BY USE OF SCREWS IN THE S-LOCKS. THERE ARE NOT TO BE ANY FASTENERS THROUGH THE METAL INTO THE CANC. DO NOT FASTEN METAL THROUGH FACE OF FLASHING.
- INSTALL NEW WOOD BLOCKING ON RAVER STONE ON 2" (50mm) EXTENDED POLYURETHANE INSULATION PAD UNDER ANY EQUIPMENT SITTING ON ROOF MEMBRANE.
- FILL ALL INTO ROOFS WITH HIGH QUALITY FLEXIBLE ELASTOMERIC ASPHALTIC CAULK AND CAULK ALL OPEN METAL SEAMS.
- CLEAN ENTIRE PROJECT OF DEBRIS AND REMOVE ALL EQUIPMENT.
- ISSUE MEMBRANE MANUFACTURER'S TWENTY (20) YEAR WARRANTY, NON PROTECTED WITH NO CHANGE ANNUAL FOLLOW UP INSPECTION (SUPPLEMENTARY SCOPE).



GENERAL NOTES:

- STORE AND HANDLE ROOFING SHEETS IN A DRY, WELL-VENTILATED, WEATHER-TIGHT PLACE. STORE ROLLS OF FELT AND OTHER SHEET MATERIALS ON RAISED SURFACE. STAND ALL ROLL MATERIALS ON END. COVER ROLL GOODS WITH A CANVAS TARPULAIN OR OTHER BREATHABLE MATERIAL (NOT POLYETHYLENE).
- DO NOT LEAVE UNUSED MATERIALS ON THE ROOF WHEN ROOFING WORK IS NOT IN PROGRESS UNLESS PROTECTED FROM WEATHER AND OTHER MOISTURE SOURCES.
- IT IS THE RESPONSIBILITY OF THE CONTRACTOR TO SECURE ALL MATERIAL AND EQUIPMENT ON THE JOB SITE. IF ANY MATERIAL OR EQUIPMENT IS STORED ON THE ROOF, THE CONTRACTOR MUST MAKE SURE THAT THE INTEGRITY OF THE DECK IS NOT COMPROMISED AT ANY TIME.
- DO NOT APPLY ROOFING INSULATION OR MEMBRANE TO DAMP DECK SURFACE.
- EXISTING DECK TO BE CLEANED PRIOR TO INSTALLATION OF NEW ROOF ASSEMBLY.
- ALL ROOFING WORK TO BE DONE IN COORDINATION WITH MECHANICAL SUBSTRINGS AND IS THE RESPONSIBILITY OF THE CONTRACTOR.
- ALL MECHANICAL UNITS TO BE RAISED FROM CURBS. NEW FLASHINGS TO EXTEND UP AND OVER CURBS. MINIMUM CURB HEIGHT IT TO BE 12" FROM THE FINISHED HEIGHT OF THE NEW ROOF.



PROJECT TITLE
TOWN OF SMOOTH ROCK FALLS
ROOF REPLACEMENT AND REPAIR
193 GORDON AVENUE
SMOOTH ROCK FALLS, ONTARIO

DRAWING TITLE
ROOF PLAN & TYPICAL DETAILS
SCOPE OF WORK & GENERAL NOTES

DESIGNED BY
CONC PAR YR

DRAWN BY
DESIGN PAR YR

CHECKED BY
DESIGN PAR DG

APPROVED BY
APPROVE PAR

DATE
MARCH 2021

PROJECT NUMBER
NO. DU PROJECT